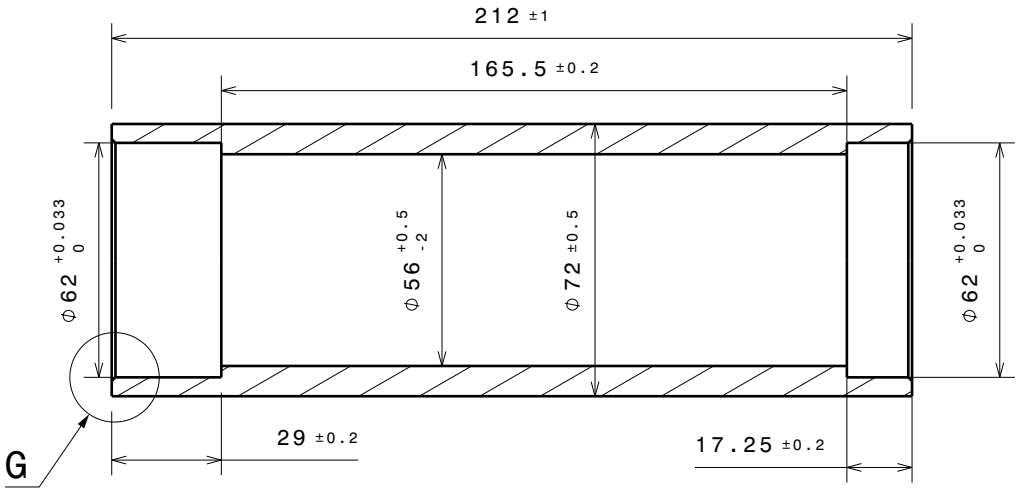
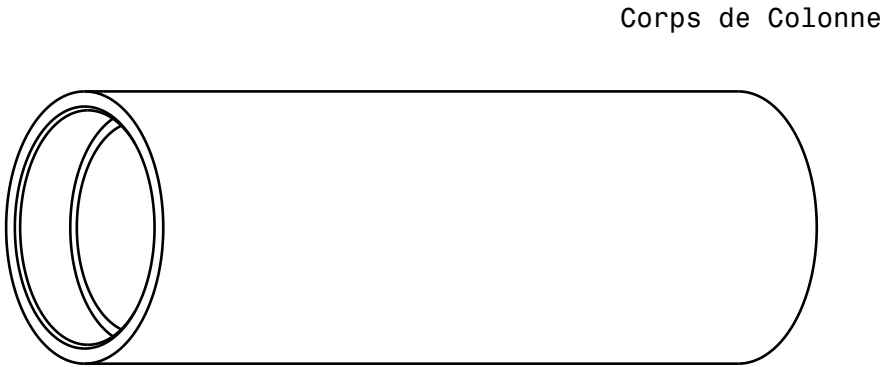


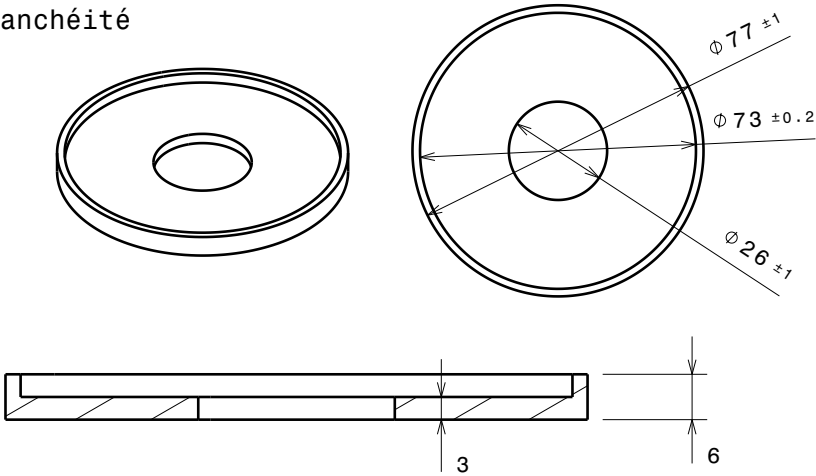
FEUILLE 3/3

AUTRES PIECES A TOURNER

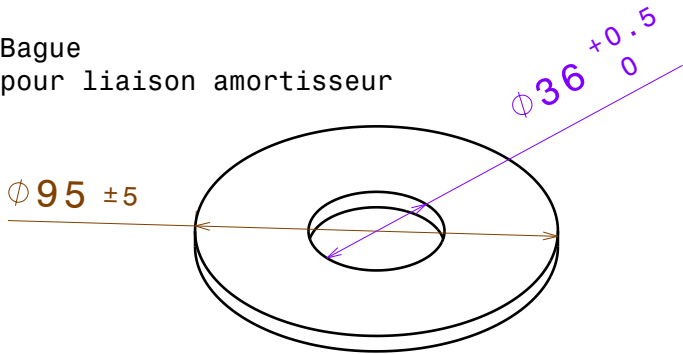
acier C35 ou équivalent



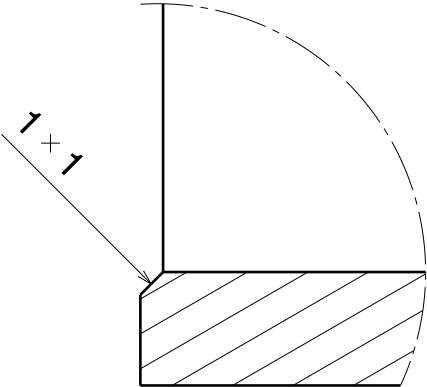
Rondelle d'étanchéité



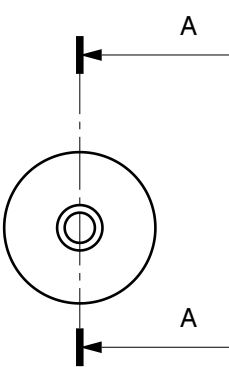
Bague pour liaison amortisseur



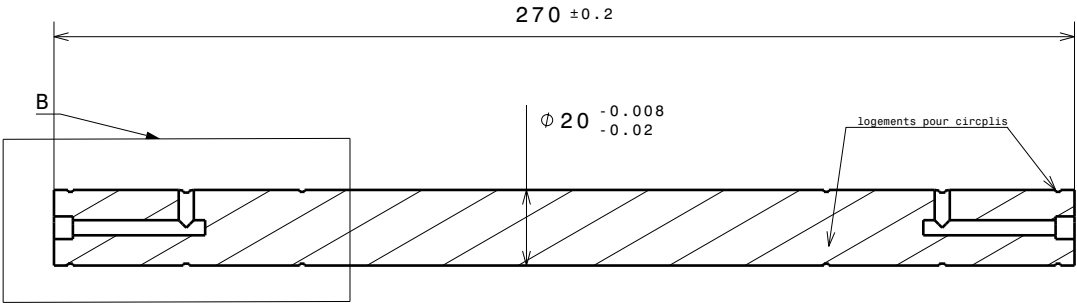
Détail G



Barre T

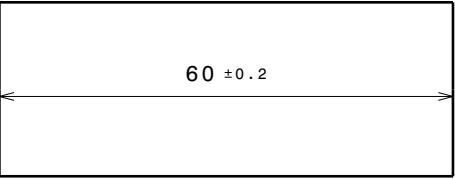


Coupe A-A



Cylindre pivot bras oscillant
Echelle : 1:1

x2



Détail B

Taroudage M6 pour graisseur

